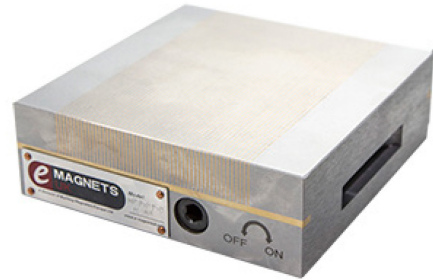


## Permanent Magnetic Chucks

- 20% More holding force than the industry standard
- High Performance Rare Earth Neodymium Magnet Technology
- Consistent holding
- Increased Output
- Suitable for Milling, Turning and Grinding
- High Precision, so also suitable for inspection work holding

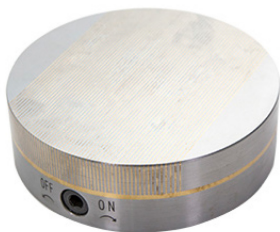


## Magnetic Workholding from E-Magnets

E-Magnets Higher Performance range of Magnetic Grinding and Magnetic Milling Chucks has been engineered to produce a new class leading holding force, giving even higher rates of productivity gains than standard Magnetic Chucks. Available in a wide range of sizes, with both Standard and Fine Pole Pitches designed to hold different product thicknesses, with an industry leading 100 n/cm<sup>2</sup> of holding force our Magnetic Chucks will consistently and safely clamp your product.

Our magnetic chucks are designed to save you money, from purchasing the magnetic chuck through to saving operation times when grinding, milling or when used for other work holding or inspection clamping operations.

The advantages of an E-Magnets Magnetic Chuck over standard holding methods are: the minimal clamping time needed between piece swap over, faster feed rates coupled with higher material removal than standard magnetic chucks, excellent access allowing up to 5 face machining, and the permanent magnetic design mean that the part is always clamped even in the event of a power failure.



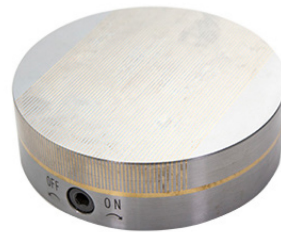
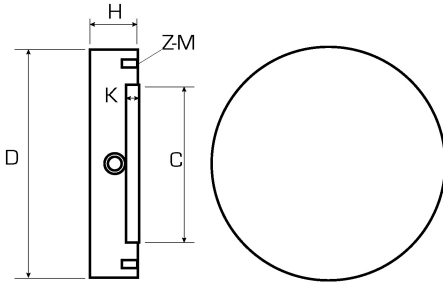
Our high precision, parallel ground faces are extremely durable, requiring minimal maintenance and are designed to complement the rugged construction and exceptional Rare Earth Neodymium Magnet technology.

Both Rectangular and Circular options benefit from our class leading magnetic holding technology and failsafe permanent magnet design and are suitable for holding all Ferrous Metals.

Model No.	Dimensions(mm)						Weight Kg.	Magnetic Force [N/CM <sup>2</sup> ]
	D	H	K	C	Z	M		
MC-125-48-R-A (AA)	125	48	3	80	4	M6	4.6	100
MC-160-48-R-A (AA)	160	48	3	100	4	M8	8.9	100
MC-200-52-R-A (AA)	200	52	4	120	4	M8	12.8	100
MC-250-52-R-A (AA)	250	52	4	160	4	M8	20	100

A is Standard Pitch: suitable for workpieces above 3mm

AA is Fine Pole Pitch: suitable for small or thinner workpieces below 3mm and helps to avoid distortion in thinner parts.



Model No.	Dimensions(mm)			Weight Kg.	Magnetic Force [N/CM <sup>2</sup> ]
	B	L	H		
MC-175-100-S-A (AA)	175	100	48	6.8	100
MC-250-125-S-A (AA)	250	125	48	11.7	100
MC-300-150-S-A (AA)	300	150	48	16.8	100
MC-350-150-S-A (AA)	350	150	48	19.6	100
MC-450-150-S-A (AA)	450	150	53	28	100
MC-600-300-S-A (AA)	600	300	58	55	100

A is Standard Pitch: suitable for workpieces above 3mm

AA is Fine Pole Pitch: suitable for small or thinner workpieces below 3mm and helps to avoid distortion in thinner parts.

